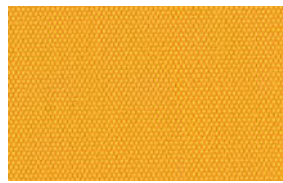


Polyester



18076

UPF 50+



18027

UPF 50+



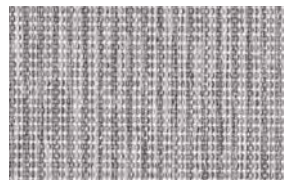
18030

UPF 50+



18018

UPF 50+



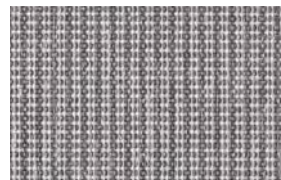
18082

UPF 50+



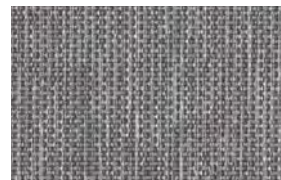
18019

UPF 50+



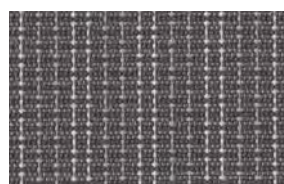
18081

UPF 50+



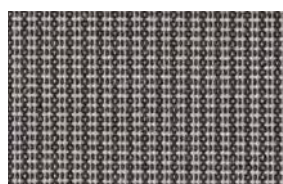
18095

UPF 50+



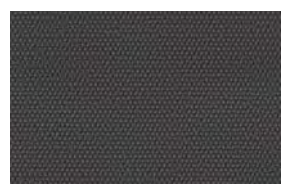
18091

UPF 50+



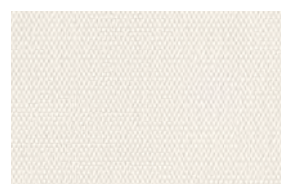
18080

UPF 50+



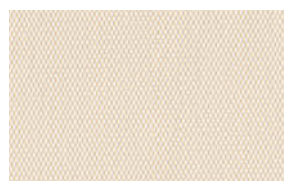
18021

UPF 50+



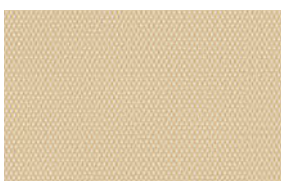
18010

UPF 50+



18011

UPF 50+



18012

UPF 50+



18013

UPF 50+



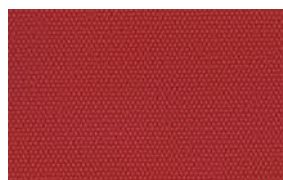
18083

UPF 50+



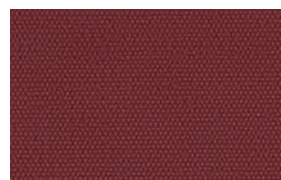
18015

UPF 50+



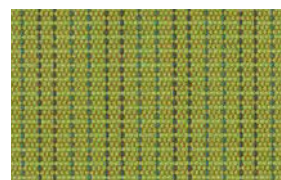
18032

UPF 50+



18033

UPF 50+



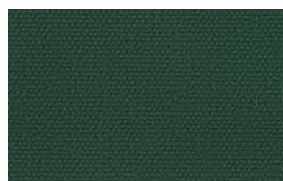
18079

UPF 50+



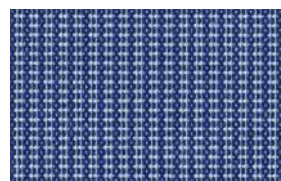
18078

UPF 50+



18025

UPF 50+



18093

UPF 50+



18022

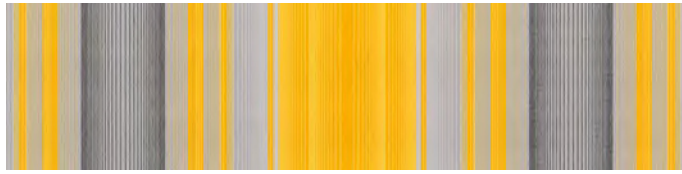
UPF 50+

Abbildungen ca. 100%. [Illustrations approx. 100 %.]



18052

UPF 50+



18049

UPF 50+



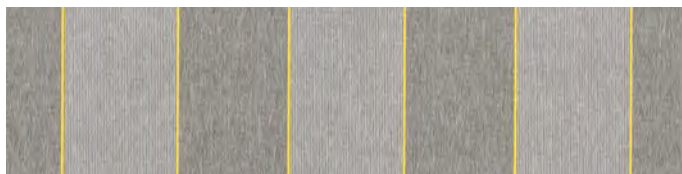
18063

UPF 50+



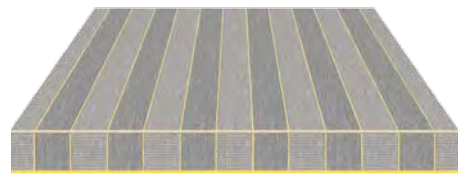
18102

UPF 50+



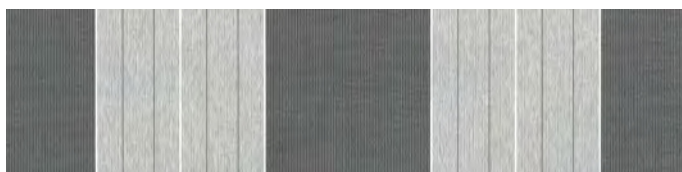
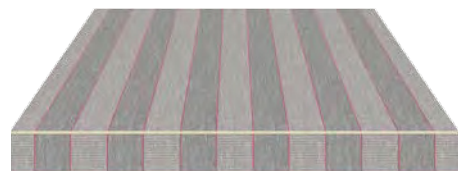
18101

UPF 50+



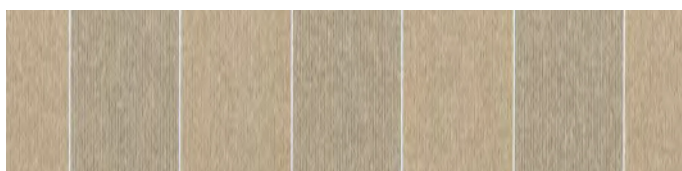
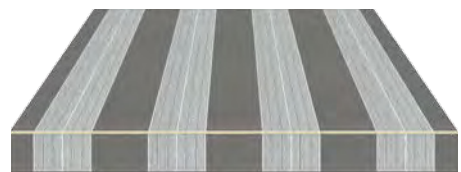
18100

UPF 50+



18099

UPF 50+



18096

UPF 50+



18066

UPF 50+









60 cm [24"]

120 cm [48"]

Technische Informationen

[Technical information]

	Recycling	Polyester
	 <p>TEMPOTEST® STARLIGHT blue ITALIAN PERFORMANCE FABRICS</p>	 <p>TEMPOTEST® STARLIGHT ITALIAN PERFORMANCE FABRICS</p>
Zusammensetzung [Material base]	85 % Recycling PET + 15 % Polyester (PET) [85 % recycled PET + 15 % polyester – PET]	100 % Polyester (PET) [100 % polyester – PET]
	spinndüsengefärbt, für den Außenbereich <i>(solution dyed, designed for outdoor use)</i>	
Breite [Width]	ca. 120 cm [47"]	ca. 120 cm [47"]
Gewicht [Weight]	290 g/m ² , +/- 5%	290 g/m ² , +/- 5%
Reißfestigkeit [Breaking Load]	Kette [Warp]: 2800 N; Ausdehnung [Elongation]: 44,5% Schuss [Weft]: 1400 N; Ausdehnung [Elongation]: 32,5% UNI EN ISO 13934-1	Kette [Warp]: 2800 N; Ausdehnung [Elongation]: 45,0% Schuss [Weft]: 1400 N; Ausdehnung [Elongation]: 33,0% UNI EN ISO 13934-1
Wassersäule [Water column]	≥ 380 mm / ≥ 14,9" – UNI-EN 20811 Spray Test 5 (100) – UNI-EN 24920	
Ölabweisend [Oil-repellent]	Stufe 5 [Degree 5] AATCC 118	
Licht- und Wetterbeständigkeit [Fastness to light and weather conditions]	Stufe 7/8-8 Blauskala – UNI EN ISO 105 B04 Stufe 4-5/5 Grauskala nach 1000 Stunden Belichtung – UNI EN ISO 105 B04 7/8-8 degree blue scale – UNI EN ISO 105 B04 4-5/5 degree grey scale after 1000 hours of exposition – UNI EN ISO 105 B04	
Ausrüstung [Finishing]	fleck-, wasser- und ölabweisend, fäulnisverhütend mit Teflon <i>(soil-resistant, water- and oil-repellent, mould-resistant)</i>	
	 	
Zertifizierung [Certification]	 <p>OEKO-TEX® CONFIDENCE IN TEXTILES STANDARD 100 21CX00053 CENTROCOT Tested for harmful substances. www.oeko-tex.com/standard100</p>	 <p>OEKO-TEX® CONFIDENCE IN TEXTILES STANDARD 100 971521.O CENTROCOT Tested for harmful substances. www.oeko-tex.com/standard100</p>
	Zertifiziert nach: Global Recycled Standard (GRS) [certified]	


Lichteigenschaften [Light properties]

Polyester





Nr. (No.)	Farbe (Colour.)	Material (Material.)	UPF	TS	RS	AS	TV	g tot ^e
18010	■	Polyester	50+	28	61	11	31	0,20
18011	■	Polyester	50+	24	60	16	24	0,18
18012	■	Polyester	50+	23	56	21	19	0,17
18013	■	Polyester	50+	17	50	33	9	0,14
18015	■	Polyester	50+	11	39	50	3	0,12
18018	■	Polyester	50+	16	50	34	14	0,13
18019	■	Polyester	50+	6	33	61	3	0,09
18021	■	Polyester	50+	0	11	89	0	0,08
18022	■	Polyester	50+	6	22	72	0	0,10
18025	■	Polyester	50+	1	13	86	0	0,08
18027	■	Polyester	50+	20	48	32	11	0,16
18030	■	Polyester	50+	19	46	35	6	0,16
18032	■	Polyester	50+	15	40	46	0	0,14
18033	■	Polyester	50+	3	19	78	0	0,09
18049	■	Polyester	50+	14	41	45	9	0,13
18052	■	Polyester	50+	21	49	30	13	0,16
18063	■	Polyester	50+	12	42	46	10	0,12
18066	■	Polyester	50+	17	45	38	12	0,14
18076	■	Polyester	50+	25	46	29	19	0,19
18078	■	Polyester	50+	7	20	73	3	0,11
18079	■	Polyester	50+	13	38	49	6	0,13
18080	■	Polyester	50+	2	16	82	2	0,09
18081	■	Polyester	50+	7	31	62	7	0,10
18082	■	Polyester	50+	11	40	49	10	0,12
18083	■	Polyester	50+	9	36	55	5	0,11
18091	■	Polyester	50+	3	17	80	3	0,09
18093	■	Polyester	50+	12	31	57	4	0,13
18095	■	Polyester	50+	4	25	71	3	0,09
18096	■	Polyester	50+	18	48	34	15	0,15
18099	■	Polyester	50+	13	32	55	13	0,13
18100	■	Polyester	50+	15	36	49	16	0,14
18101	■	Polyester	50+	15	37	48	16	0,14
18102	■	Polyester	50+	17	45	38	12	0,14

 **UPF** UV-Schutzfaktor
UV protection factor

 **TS** Strahlungs-Transmission in %
Solar Transmission [%]

 **RS** Strahlungs-Reflexion in %
Solar Reflection [%]

 **AS** Strahlungs-Absorption in %
Solar Absorption [%]

 **TV (n-h)**
Transmission von sichtbarem Licht normal-hemisphärisch in %
Normal-hemispherical visible light transmission [%]

g tot ^e Sonnenschutzfaktor außen
Verglasung Typ „C“: doppelte Isolierverglasung
External solar factor, Type “C” glazing: insulating, double glazing